

## Panasonic FZ-G1 Barcode Scanner Setup

**Step 1:** Locate the following two applications:

- **2D Barcode Key Emulator**
- **Barcode Configuration Utility**

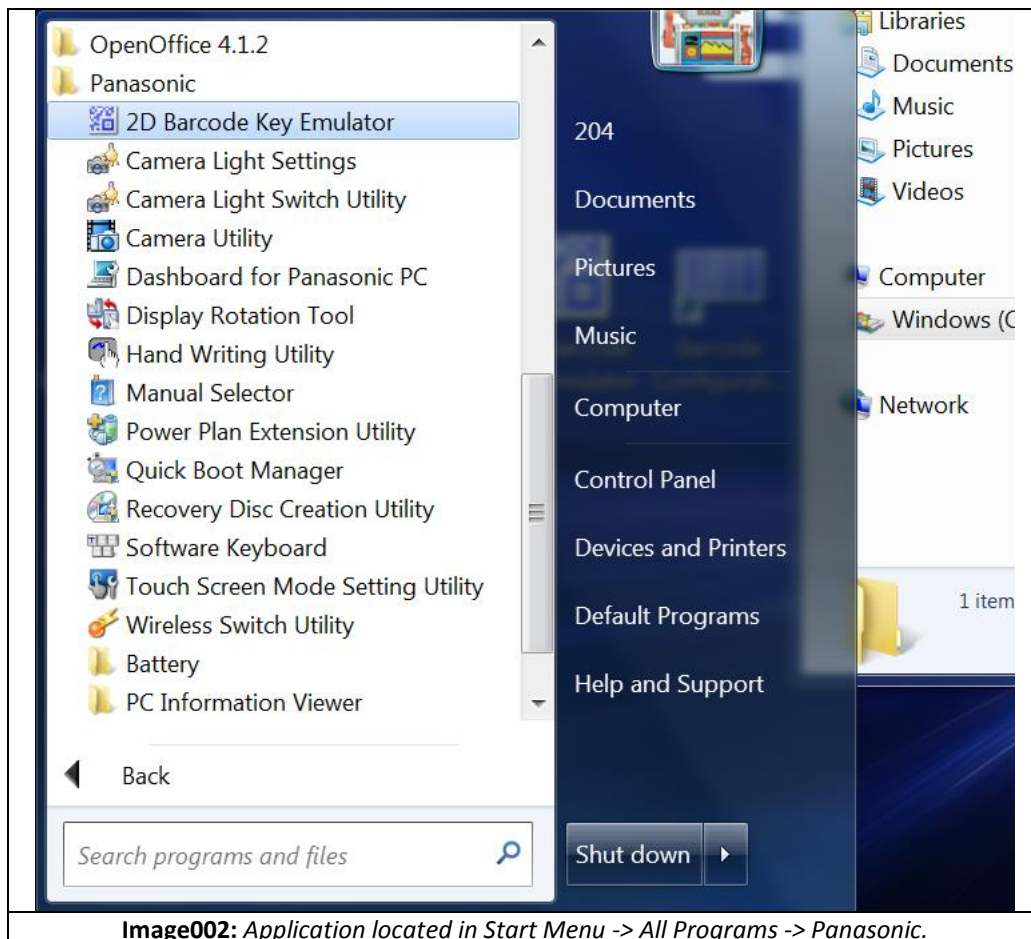
These applications should have shortcuts located on the desk top.  
(Ref: Image001).

If there are no shortcuts on the desktop, “2D Barcode Key Emulator” can be found within the Start Menu under All Programs -> Panasonic.

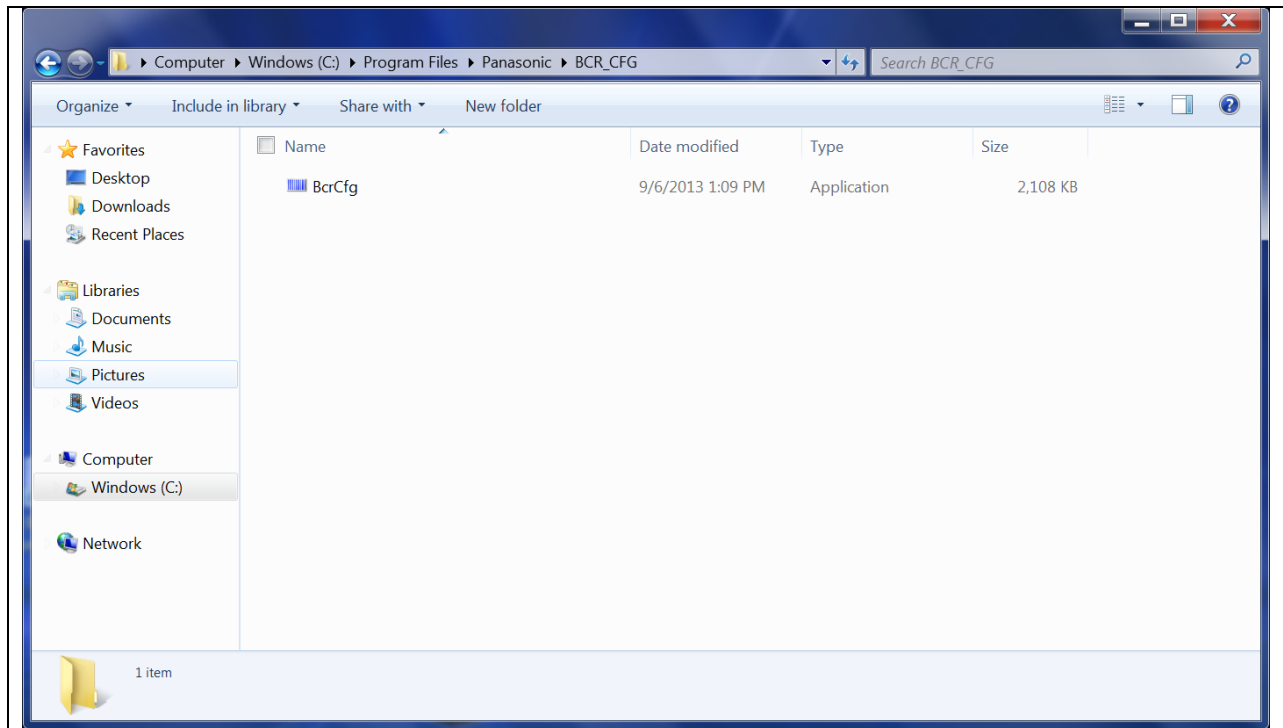
(Ref: Image002). “Barcode Configuration Utility” can be found by loading File Explorer and navigating to C:\Program Files\Panasonic\BCR\_CFG\.



**Image001:** Application shortcuts as they appear on the Desktop.

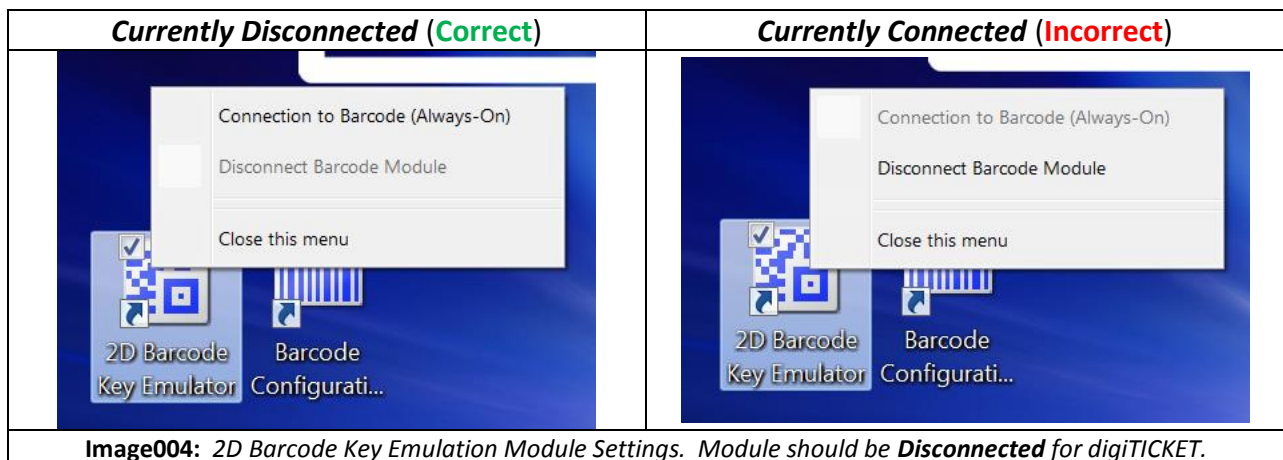


**Image002:** Application located in Start Menu -> All Programs -> Panasonic.



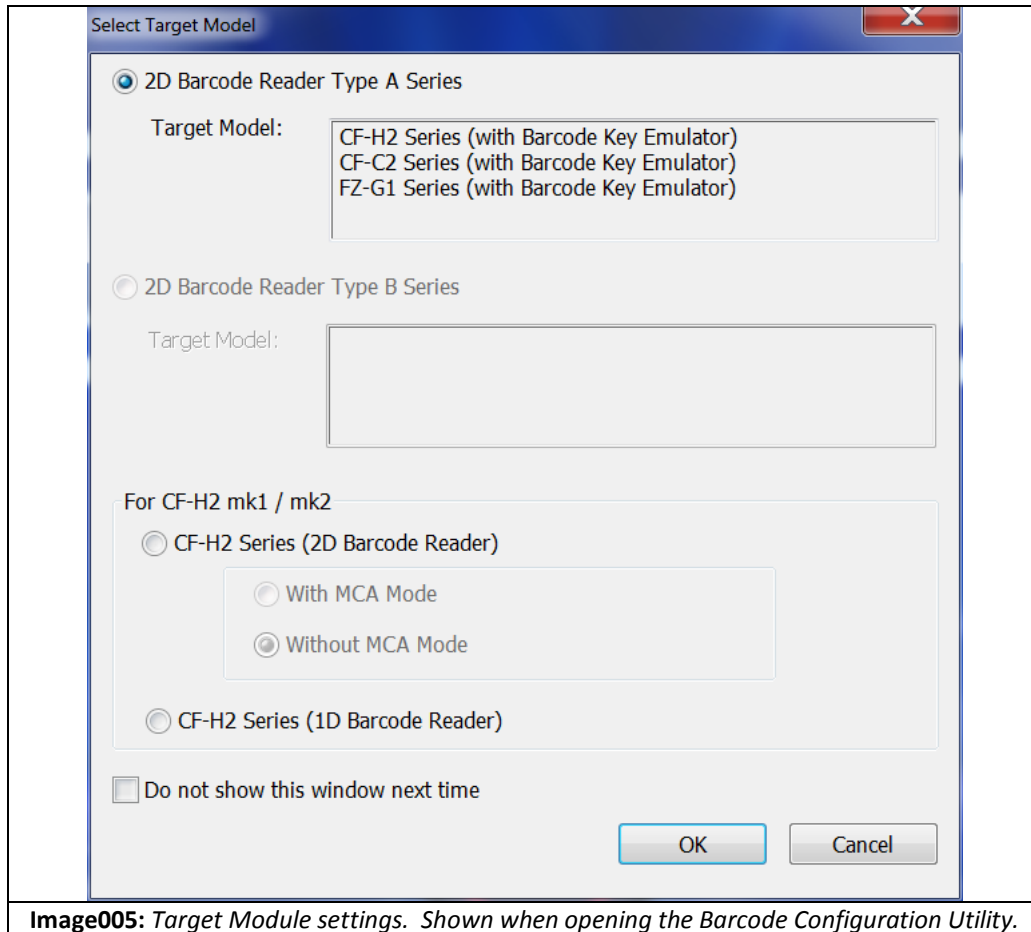
**Image003:** Application located in C:\Program Files\Panasonic\BCR\_CFG\.

**Step 2:** Double tap on the 2D Barcode Key Emulator icon to open the menu options, and Disconnect Barcode Module. (Ref: Image004).



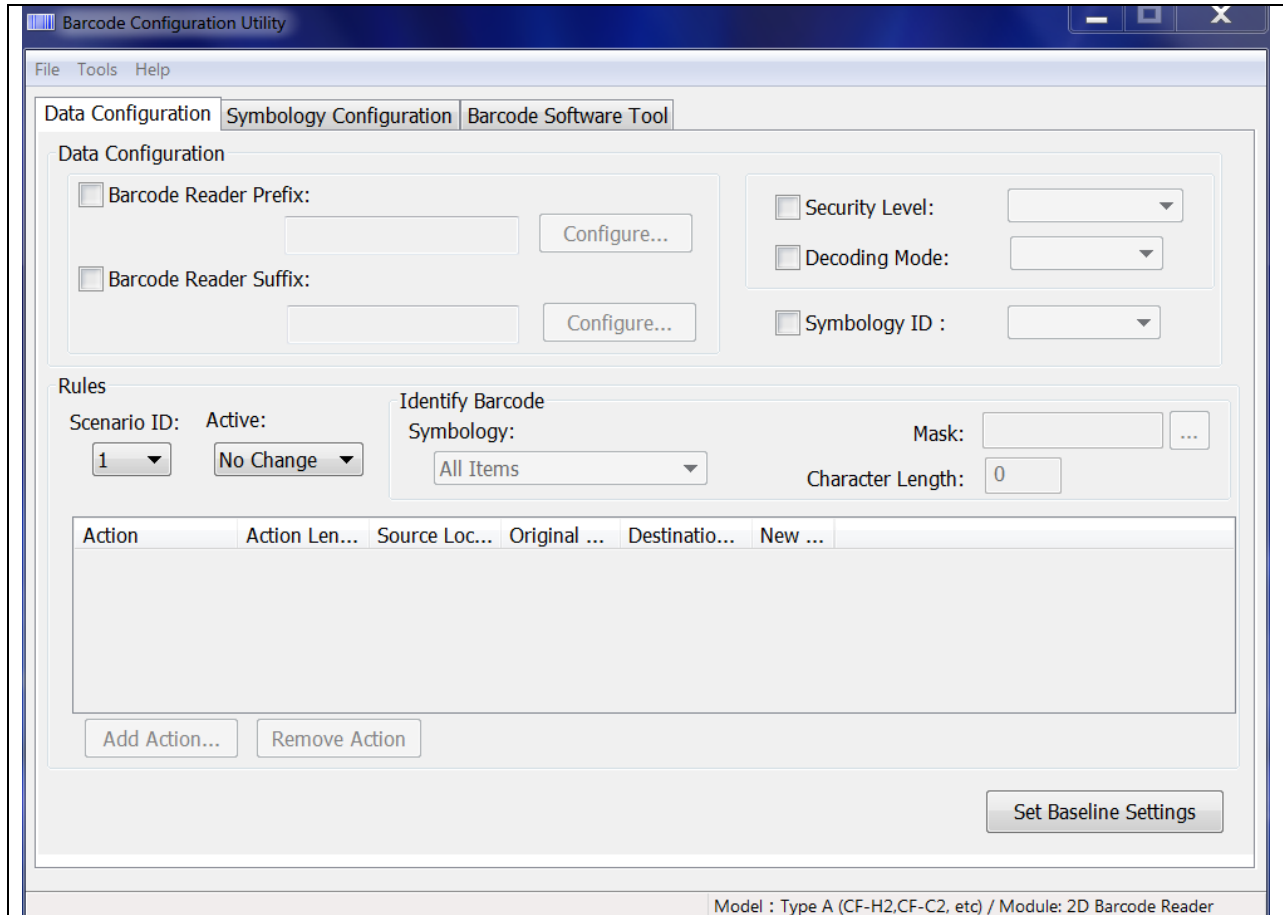
**Image004:** 2D Barcode Key Emulation Module Settings. Module should be **Disconnected** for digiTICKET.

**Step 3:** Open the Barcode Configuration Utility. The first screen that appears is the Target Module screen. Target Module should be set to 2D Barcode Reader Type A Series. (Ref: Image005).



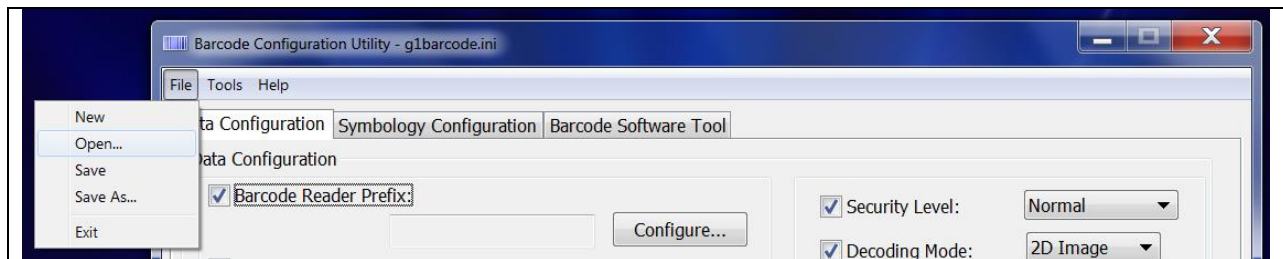
**Image005:** Target Module settings. Shown when opening the Barcode Configuration Utility.

**Step 6:** After verifying the Target Module settings, press OK, and you should be directed to the Data Configuration tab of the Barcode Configuration Utility. (Ref: Image006).



**Image006:** Barcode Configuration Utility. Data Configuration tab is opened by default.

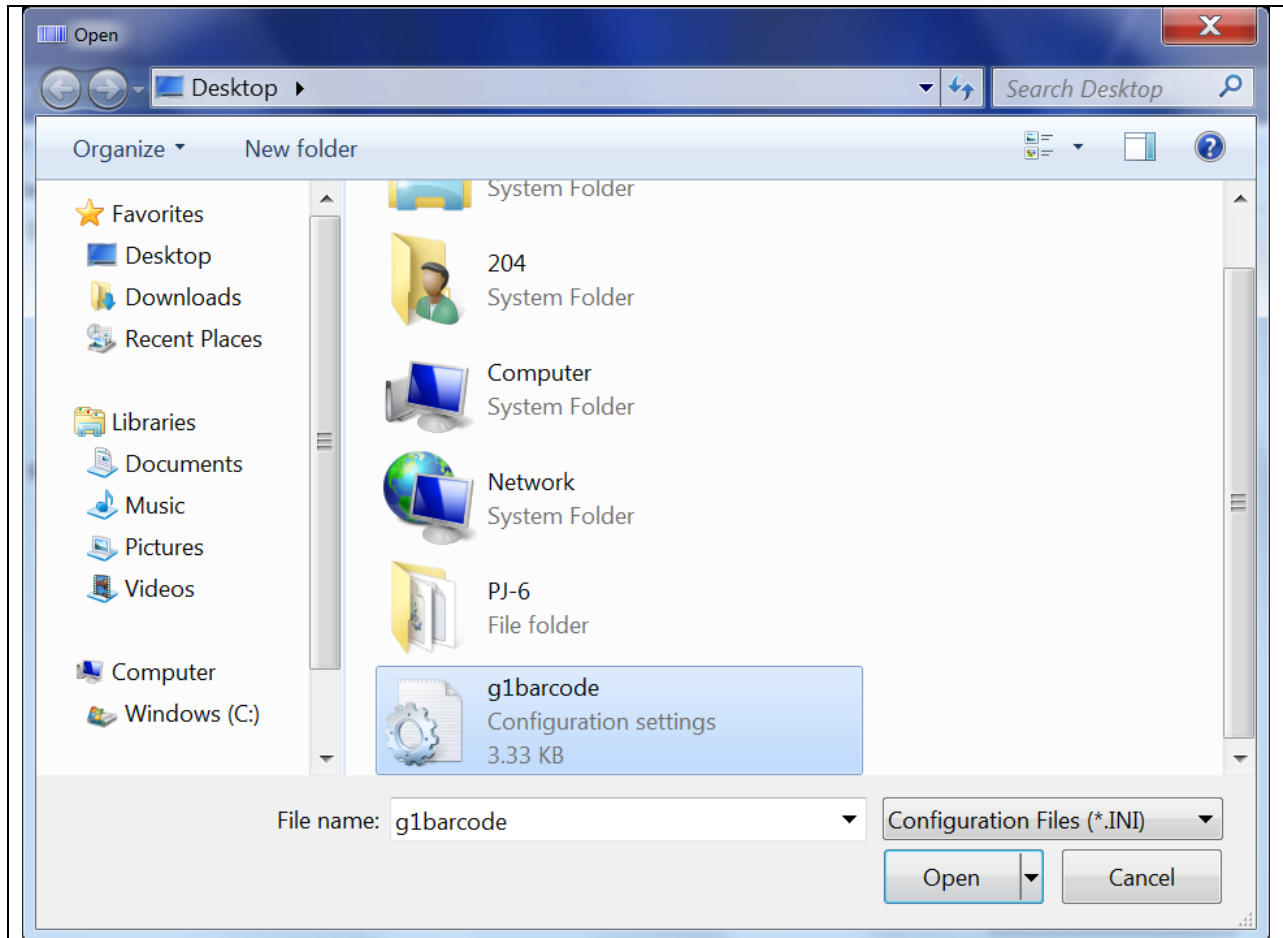
**Step 7:** At the top of the Barcode Configuration Utility, select File -> Open. (Ref: Image007).



**Image007:** Barcode Configuration Utility. File -> Open.

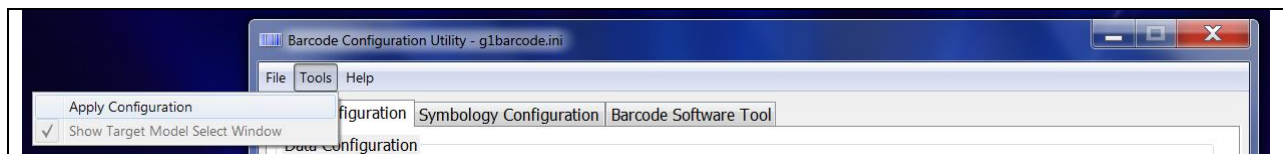
**Step 8:** Navigate to where you have saved the Barcode Config .INI file, provided by Saltus, select it, and tap Open.

(Ref: Image008. Note: Location and Name of the .INI file may differ from Screenshot.)



**Image008:** Example of Barcode Config .INI file saved to the Desktop. Select and hit Open.

**Step 9:** Once the settings have loaded into the Barcode Configuration Utility, select Tools at the top, and tap Apply Configuration. (Ref: Image009).



**Image009:** Barcode Configuration Utility. Tools -> Apply Configuration.

**Step 10:** After Applying Configuration, press the A2 button to verify Barcode scanner is still ON. If not, Apply Configuration again and re-verify. (Intermittent G1 issue; doesn't always happen).